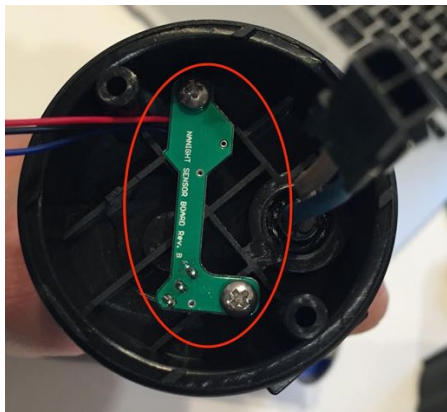




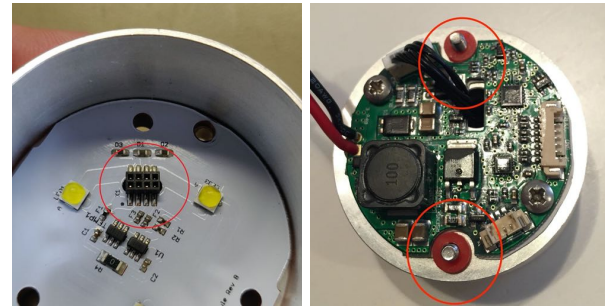
Nanight Tech 2 Disassembly

1. Unscrew the housing pipe. It is sometimes easier to unscrew the housing if the Goodman handle is removed first).
2. Remove the lens and then the two cooling cup screws.
3. Lift out the cooling cup, and remove the two connectors.
4. The magnetic (hall) sensor module is attached to the bottom of the plastic end plug and the LED driver is attached to the backside of the cooling cup.

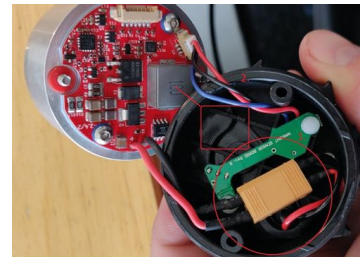


Reassembly

5. To connect the LED module, make sure that the pins on the driver card connector has a corresponding hole in the LED module connector before you press the LED module on to the driver card connector.



6. Place the two cooling cup screws in the corresponding holes. Attach the anti-loss washers on the backside of the cooling cup screws.
7. Make sure that the canister connector (*1) is tucked in besides the sensor board and that the big coil (*2) is on the opposite side of the canister connector. Assemble and tighten the two cooling cup screws moderately.



8. Refit the housing.